

PLEASE NOTE The connection of this radiator to a central heating system should only be carried out by a suitably qualified person who is familiar with current regulations.

Read this guide before starting installation

Handling Advice

Please refer to the handling guidelines provided with this product. This contains important information about the safe handling of these radiators to minimise risk and damage.

Assembly Advice

Large size radiators may be supplied in sectional form for ease of handling. If this is the case then please refer to the site assembly instructions supplied separately.

Water Treatment

These products are for use on closed heating systems only; they are not suitable for installation on secondary HWS circuits.

On completion of the installation the entire system **MUST** be thoroughly cleaned and flushed to remove debris/flux residues etc. If a chemical cleaner is used, it must be thoroughly flushed from the system. Following this, the system **MUST** be dosed with a good quality water treatment to prevent corrosion.

IMPORTANT: Failure to observe these requirements will render the product guarantee void. Corrosion inhibitor must be used in accordance with the manufacturer's instructions and recommendations and should take into account the particular metals within the system.

Cleaning & Aftercare

The external surface of the radiator should be cleaned with mild detergent. No solvents or abrasives should be used.

Painting

If they were supplied in primer finish they can be covered with a variety of paint types including water-based, oil-based, cellulose, 2-pack acrylic and stove enamel. These radiators may have been supplied factory painted in your choice of colour. If so, no further painting or surface treatment is necessary or recommended. Always consult the paint manufacturer's instructions.

Operating Pressure

These radiators are designed to operate at a system maximum pressure of 6 bar.

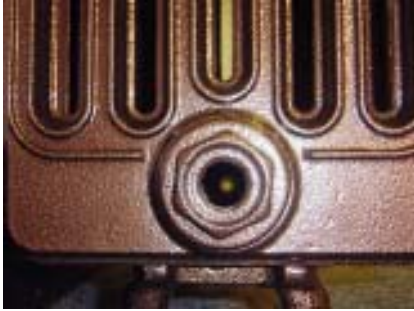
Warranty & further information

These radiators have been designed, manufactured and tested to ensure long-lasting use. They are guaranteed to be free from material and manufacturing defects for 5 years from date of purchase. Should you require any further information, help or advice about any aspect of installing and maintaining these radiators, please contact our office.



Bushes & Washers

Each radiator is supplied with a bush & washers for each of the 4 connections.



Two 1/2" BSP threaded bushes for connecting radiator valves



One bush for the air vent



One blank bush

All of the bushes and brackets are supplied loose and must be fitted to the radiators before installation.

NB: 2 of the 4 bushes have left-handed threads and must only be fitted to the appropriate ports.

Use only the sealing rings supplied for sealing the bushes, air vents and plugs.

No thread sealant paste or tape may be used on the thread or bush which mates into the radiator.

When fitting radiator valves to the left-hand threaded bushes; hold the bushes firmly with a spanner. This will ensure that the bushes are not allowed to rotate and become loosened., thereby preventing the risk of leaking.

It is recommended that the threaded tail pieces of radiator valves or other pipe fittings that are screwed into the bushes are sealed with PTFE thread sealing tape. Sealing compound can also be used but great care must be taken to ensure that the sealing compound makes no contact with any of the sealing rings.



Wall retaining stays with plain floor support brackets (standard option).



Wall retaining stays with wall hanging brackets (standard option).



Wall retaining stays with tiger foot floor support brackets (optional extra).

Connection Details

The radiator can be installed with the following connection (inlet & outlet) configurations, referred to by the codes indicated below.

Note:

The radiators are not reversible from top to bottom.

